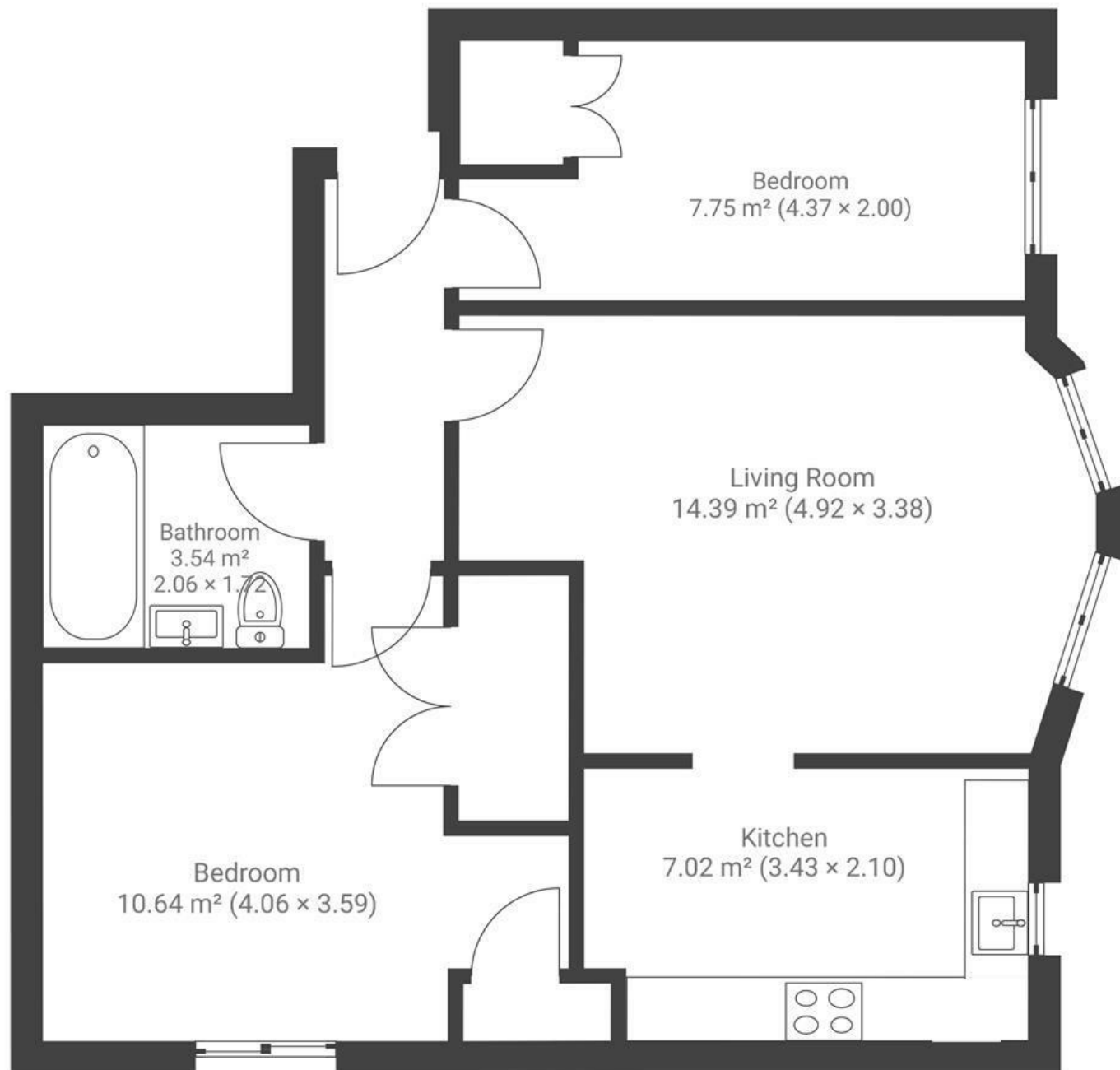


Pooles Wharf Court

HOTWELLS

APPROXIMATE FLOOR AREA
52 SQM / 560 SQFT



Boardwalk

Pooles Wharf , BRISTOL



£325,000



2 Bedrooms



BS8 4PB



1 Bathrooms

"Everyone who has lived here mentions how quiet and bright the flat is, the harbourside location means there is so much to explore nearby and there is a friendly, helpful community at Pooles Wharf Court"

